

November

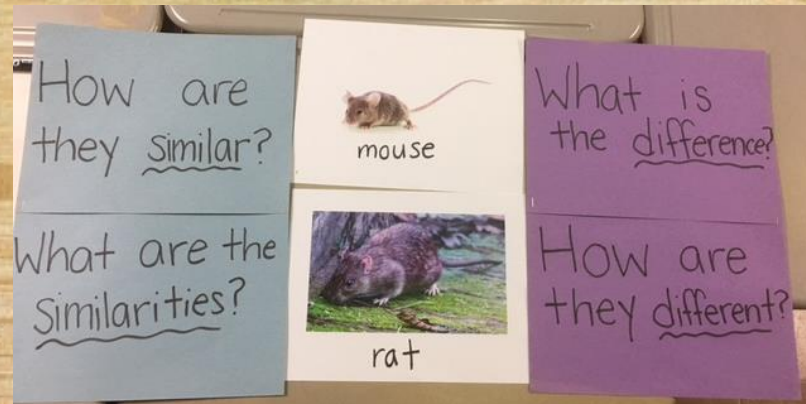
Greenwich Japanese School | English Newsletter
Spotlight on...

4B English

4B has been learning about wild animals! The focus of this unit is describing animals' features and abilities, as well as comparing them. For example, what is the difference between a **squirrel** and a **chipmunk**? 4B will describe and compare a variety of animals. We will also learn how to use comparative adjectives (bigger than; smaller than) and superlative adjectives (*Cheetahs are **the fastest** land animal*).

A lot of vocabulary is necessary for describing animals. For example, is its skin *smooth* or *rough*? Does it have *stripes* or *spots*? What kind of *habitat* does it live in? 4B will be practicing using these words and more over the coming weeks.

Near the end of the semester, each student will prepare a presentation on an animal of their choice, using all of the grammar points and vocabulary we have been studying!



DID YOU KNOW?
IN ENGLISH, A "MOUSE" IS DIFFERENT FROM A "RAT."
RATS ARE LARGER AND PEOPLE USUALLY THINK THAT THEY ARE DIRTY.